

1

BED

Top Floor Flat with a Private Roof Terrace

30e, Esplanade, Seaford, BN25 1JJ



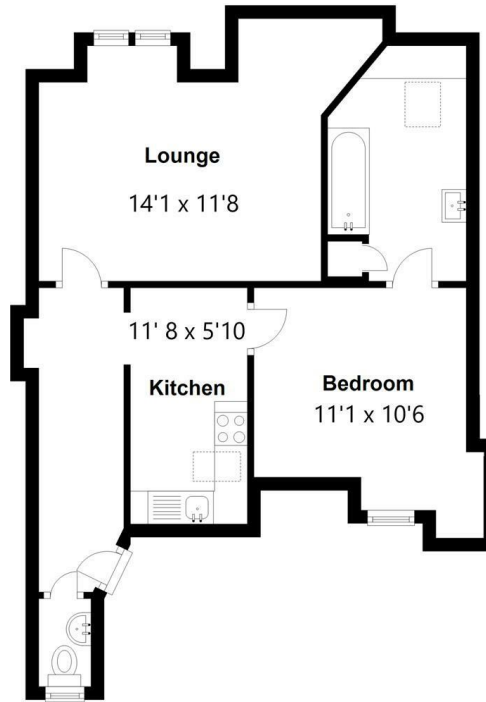
Price £200,000

Share of Freehold

phillipmann
we do more

www.phillipmann.com

Top Floor
Approx. 48.9 sq. metres (526.3 sq. feet)



inbrief...

Guide Price £200,000 - £225,000

Phillip Mann estate agents are delighted to offer for sale this unique 1 bedroom TOP FLOOR apartment. The property has the benefit of a private roof terrace with sea views, views towards Seaford Head and share of the freehold.

The flat is accessed via a communal entrance with stairs to the third floor and private door to flat E. The hallway benefits from laminate flooring and storage heater. The cloakroom has been fitted with a a low level w/c, wall mounted wash hand basin and has a window to the rear.

The living room is to the front and benefits from an electric storage heaters and a window to the front with direct sea views. The kitchen has been fitted with a stainless steel sink and drainer unit with mixer taps and cupboards and drawers below, there is a built in cooker with electric hob, space for a fridge freezer, laminate flooring and a Velux window.

The bedroom has an electric storage heater and a double glazed window to the front. The bathroom has been refitted with a white suite comprising a panel bath with mixer taps and electric shower over, wash hand basin set into a vanity unit, heated ladder towel rail, plumbing and space for a washing machine, part tiled walls and a Velux window to the front.

Outside the private roof terrace benefits from stunning views of the sea towards Newhaven and views towards Seaford Head.

Outgoings:

Lease: TBC

Service Charge: Paid on an 'as and when' basis.



Council Tax Band: A

Energy Rating: E

moreinfo...

Phillip Mann Seaford Office

1-3 Dane Road, Seaford, East Sussex, BN25 1LG

01323 898666

To see more details on this & all our homes go to www.phillipmann.com

